

# THE GAME



## THE TOURNAMENT

- ★ All-Star **Double Elimination format** - Round 1 | 8 Teams | 10 matches
- ★ Teams will play up to 3 matches.
- ★ 2 wins and the team will advance straight through to the Semi Finals.
- ★ 2 defeats and the team will be sent packing!
- ★ Semi Finals and Final will involve a **Straight Knockout**.

## THE TEAMS

The **top 8 teams** from the 2016-17 BBL Championship will feature in the tournament, each with a squad of up to 12 players – as per standard BBL rules.



## TIMING

Standard Rules of Basketball have been changed so that there are no breaks in play.

All British Basketball All-Stars matches will have a running clock of **12 minutes**, with a **20 second Shot Clock** in play.

Each team has the option to take one **30 second timeout** per match, which can be taken at any stage in the game.

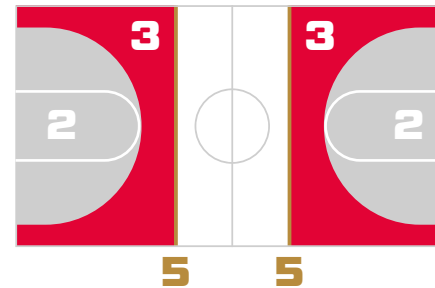
## POWER PLAY



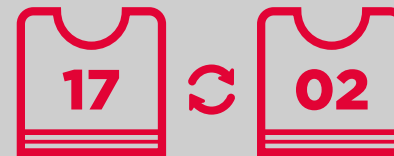
Each All-Star team will have the ability to double all points scored in a **2-minute Power Play**.

The Power Play must conclude during the first 10 minutes of the game and cannot be used while the opposing team's is in motion – **a fight for the golden buzzer!**

## THE BASKET



<b>5</b> POINTS	The All-Star 5 point line
<b>3</b> POINTS	3 point zone
<b>2</b> POINTS	2 point zone



## SUBSTITUTIONS

British Basketball All-Stars Championship includes rolling substitutions, which means a change can be made at any stage of the match.

## GAME MANAGEMENT

There will be a limit of **3 personal fouls** in each game, once an All-Star player has reached this they will be sent to the Sin Bin and **suspended for 30 seconds**. Their team will not be able to replace a player on court when in the Sin Bin.

There will be a limit of **6 Team Fouls** in each game, once exceeded each subsequent Team Foul will result in an **Automatic One Point + Possession**.

There will be **no Free throws** in the British Basketball All-Star Championships.

